

WORKTOP WASTE BEZELS

These edging trims are designed to be fitted in worktops in restaurants and hotel kitchens above waste receptacles. They are manufactured from easy to clean stainless steel, and are available in various shapes to suit different designs of kitchen, or to differentiate between different types of waste e.g. recyclable products and food waste.

With minimal projection off the face they prevent build up of dirt and germs on the work surface. The edge lining is 45mm deep and is designed to suit 40mm thick worktops. They can be supplied with deeper edge linings for thicker worktops to special order. Circular and square canteen lids are available as an optional extra.

CIRCULAR BEZEL

Material: grade 304 stainless steel.
 Finish: standard finish satin, polished available to order.
 Size: 285mm diameter outside frame.
 Chute: clear chute diameter 200mm.
 Cut-out: cut-out in work surface should be 225mm.
 Fixing: with two 60mm welded threaded fixing pins, washers and nuts.
 Box Qty: packed 1 per box, 4 per outer.

WWB.1 200mm dia clear chute bezel, satin stainless steel



CIRCULAR LID (OPTIONAL)

Material: grade 304 stainless steel.
 Finish: standard finish satin, polished available to order.
 Size: 260mm diameter.
 Knob: fitted with WWK.1 20mm diameter cylindrical knob.
 Box Qty: packed 1 per box, 4 per outer.

WWL.1 260mm dia circular lid, satin stainless steel



SQUARE BEZEL

Material: grade 304 stainless steel, fully welded mitres.
 Finish: standard finish satin, polished available to order.
 Size: 240x240mm outside frame.
 Chute: clear chute size 150x150mm.
 Cut-out: cut-out in work surface should be 180x180mm.
 Fixing: with two 60mm welded threaded fixing pins, washers and nuts.
 Box Qty: packed 1 per box, 4 per outer.

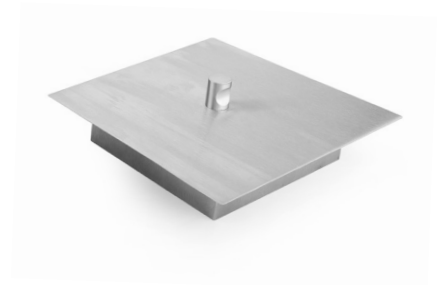
WWB.3 150x150mm clear chute bezel, satin stainless steel



SQUARE LID (OPTIONAL)

Material: grade 304 stainless steel.
 Finish: standard finish satin, polished available to order.
 Size: 212x212mm.
 Knob: fitted with WWK.1 20mm diameter cylindrical knob.
 Box Qty: packed 1 per box, 4 per outer.

WWL.3 212x212mm square lid, satin stainless steel



OPTIONAL LID KNOBS

Knobs are included with the canteen lids above. They are also available separately so other kitchen furniture can be suited to match.

WWK.1 20mm diameter cylindrical knob, satin stainless steel
WWK.2 25mm diameter spherical ball knob, satin stainless steel

