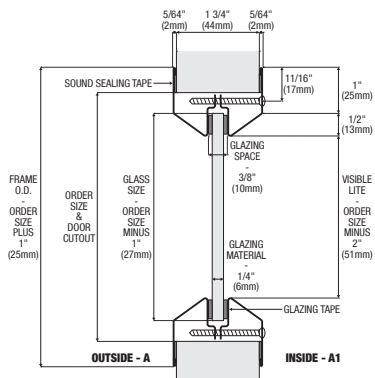
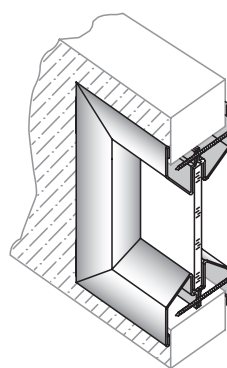
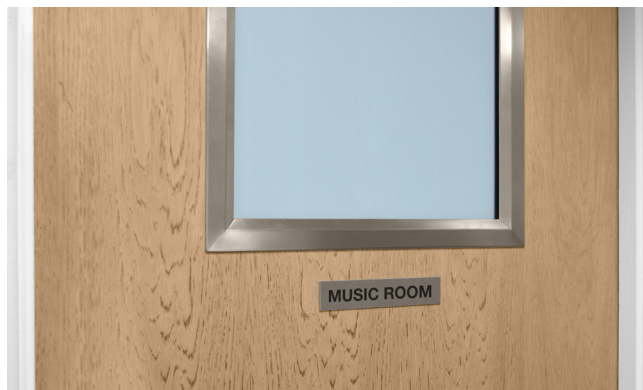


ANEMOSTAT ACOUSTIC VISION FRAMES NEW

LOPRO-STC LOW PROFILE ACOUSTIC RATED METAL VISION FRAME ASSEMBLY - NEW TESTING 2019

After the successful launch of the Anemostat LoPro-STC acoustic vision frame set, we decided to further increase its depth of testing by undertaking some acoustic tests with the most popular glasses we are asked to supply here in the UK. The vision frame comes with sound sealing tape applied to the underside perimeter of both frame sides, or supplied separate if requested. CAUTION: Sound Sealing Tape should not be exposed to a heat-treating process from post factory applied finishes, such as powder coating.

- Material:** 20GA cold rolled steel. Also available Grade 304 & 316 stainless steel to special order.
- Finish:** Galvanised grey primed as standard, other finishes available to special order.
- Door thickness:** For 44-46mm metal or timber doors. LoPro-IS suits other door and glass thicknesses.
- Glass thickness:** Profiles AA1 suit 6mm glass and BB1 suit 25mm glass (DGU) on 44-46mm doors.
- Glazing tape:** Units should be glazed with FS9009 & ZPGT sound sealing glazing tape as tested.
- Aesthetics:** Tight mitred corners, bevelled glass stops, and low profile provide a clean tapered look, concealed fixing one side only.
- Test standards:** Tested size 610x610mm cut-out. Tested in accordance with BS EN ISO 10140-2:2010 Acoustics - Laboratory measurement of sound insulation of building elements. Measurement of airborne sound insulation. Testing conducted at Exova, High Wycombe, UK. Copy of test report available upon request.



LoPro-STC AA1 with ZPGT Sound Sealing & Glazing Tape

- 36dB with 6.4mm Laminated
- 35dB with 6mm Toughened
- 36dB with 7.5mm Anti-Bandit Laminated

LoPro-STC AA1 with FS9009 Sound Sealing & Glazing Tape

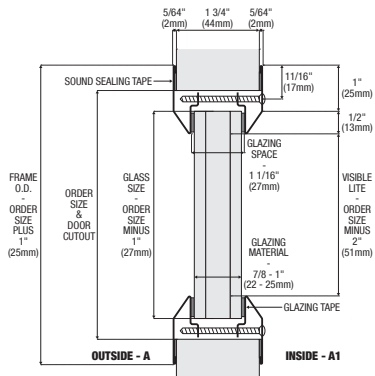
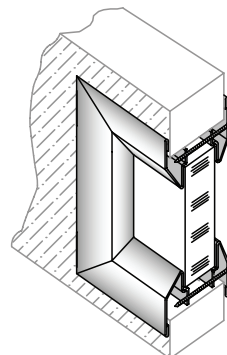
- 34dB with 5mm Firelite
- 35dB with 6mm Pyrocet
- 36dB with 7.2mm Georgian Wired
- 37dB with 9mm Firelite Laminated

LoPro-STC BB1 with ZPGT Sound Sealing & Glazing Tape

- 38dB with 6mm Toughened DGU
- 39dB with 6.4mm Laminated DGU

LoPro-STC BB1 with FS9009 Sound Sealing & Glazing Tape

- 38dB with 5mm Firelite DGU
- 38dB with 6mm Pyrocet DGU



LOPRO-STC LOW PROFILE ACOUSTIC RATED METAL VISION FRAME ASSEMBLY WITH ZPGT GLAZING TAPE & SOUND SEALING TAPE				
REF	SIZE IN INCHES W X H	CUT-OUT MM W X H	CLEAR VISION MM W X H	GLASS SIZE MM (NOT INCLUDED)
LOPRO-STC-GT 1212 AA1	12 x 12	305 x 305	254 x 254	278 x 278
LOPRO-STC-GT 1212 BB1	12 x 12	305 x 305	254 x 254	278 x 278
LOPRO-STC-GT 1818 AA1	18 x 18	457 x 457	406 x 406	430 x 430
LOPRO-STC-GT 1818 BB1	18 x 18	457 x 457	406 x 406	430 x 430
LOPRO-STC-GT 2424 AA1	24 x 24	610 x 610	559 x 559	583 x 583
LOPRO-STC-GT 2424 BB1	24 x 24	610 x 610	559 x 559	583 x 583

LOPRO-STC LOW PROFILE ACOUSTIC RATED METAL VISION FRAME ASSEMBLY WITH FS9009 GLAZING TAPE & SOUND SEALING TAPE				
REF	SIZE IN INCHES W X H	CUT-OUT MM W X H	CLEAR VISION MM W X H	GLASS SIZE MM (NOT INCLUDED)
LOPRO-STC-FS 1212 AA1	12 x 12	305 x 305	254 x 254	278 x 278
LOPRO-STC-FS 1212 BB1	12 x 12	305 x 305	254 x 254	278 x 278
LOPRO-STC-FS 1818 AA1	18 x 18	457 x 457	406 x 406	430 x 430
LOPRO-STC-FS 1818 BB1	18 x 18	457 x 457	406 x 406	430 x 430
LOPRO-STC-FS 2424 AA1	24 x 24	610 x 610	559 x 559	583 x 583
LOPRO-STC-FS 2424 BB1	24 x 24	610 x 610	559 x 559	583 x 583

Other sizes available from 102 x 102mm up to 813 x 1829mm cut-out in door.